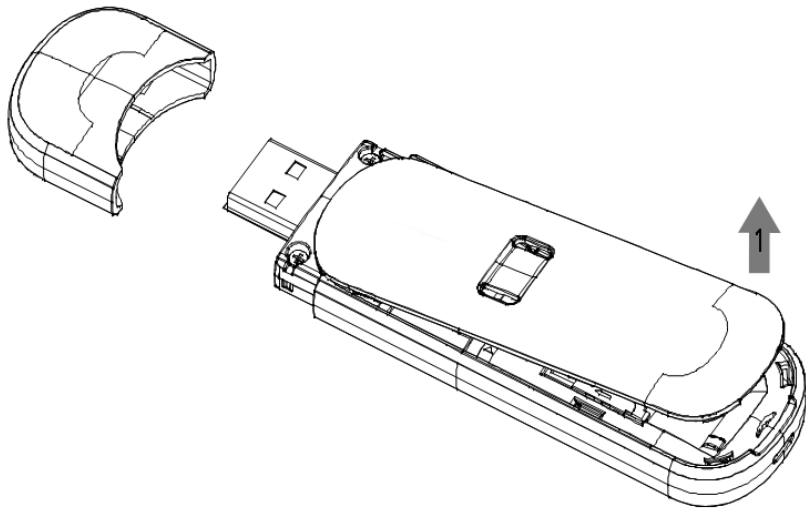
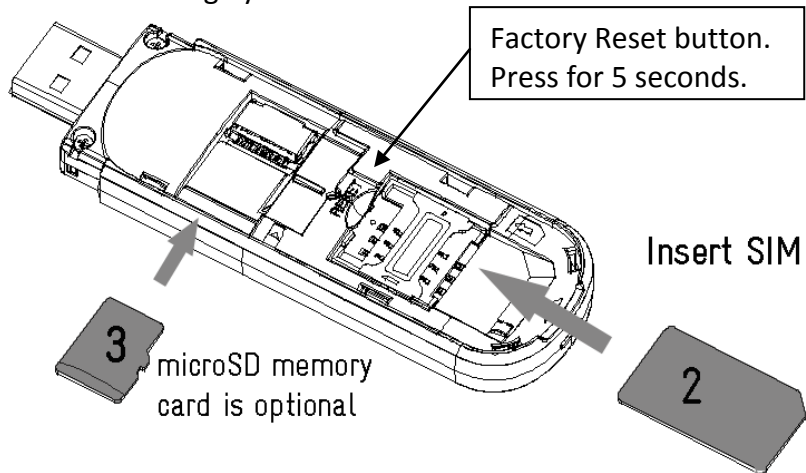


Getting Started – How to insert the SIM card

1. Open the top cover of the device using the thumb catch:



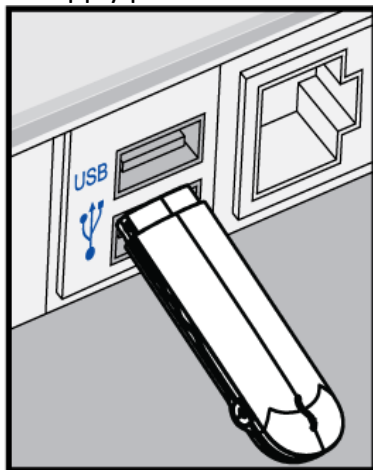
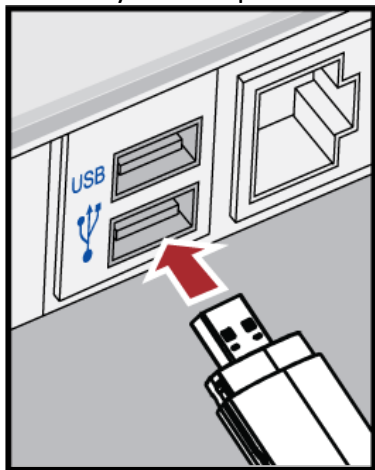
2. Insert your standard size SIM card as shown. Make sure it is pushed all the way in. **NOTE:** Do NOT use micro SIM or adaptors which can damage your device.



3. If you wish to use your device for portable USB storage then insert an optional microSD™ card as shown. microSD(HC)™ memory cards up to 32GB are supported by this device.

Plug in

Remove the end cap and insert the USB plug into a spare USB socket on your computer or into the power supply provided:



TIP

You can use the USB double extension cable to provide additional power to the modem, especially with older laptops.

Connect via Wi-Fi

On your computer, select your network and sharing centre from the tool bar, My Network Places, or via the Control Panel. Look for the new Wi-Fi connection that starts with TEWM (Telstra Elite Wi-Fi Modem).

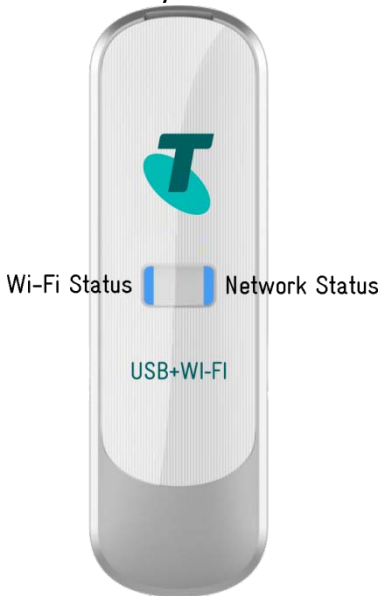
Modem Identification (SSID)	TEWM_XXXXXX
Password	8847XXXXXX
Where XXXXXX is a unique code for your device	






Enter the password shown on your security card, 8847XXXXXX. The password is case sensitive so use capital letters exactly as shown on the security card.



If you have lost your security card the default password is 8847 followed by the last 6 digits of your MAC address which is printed under the cover of your modem.

Check the LED status indicators

The LED lights indicate your network connectivity and Wi-Fi status and both LED's will flash when you are transferring data.



Network indicator	Modem Status
 Red	Offline. Not registered on the network
 Green solid	Registered on the 2G network
 Green blinking	Active data transfer on the 2G network
 Blue solid	Registered on the 3G network
 Blue blinking	Active data transfer on the 3G network

Wi-Fi indicator	Modem Status
No LED	Wi-Fi is Off. Log onto your unit to switch on
 Blue solid	WPS is active
 Blue blinking	Wi-Fi is active

Use a browser to connect to the modem homepage

Open your internet browser and enter <http://m.home> in the address bar. You can also connect using the IP address 192.168.0.1

Telstra Pre-Paid 3G USB + WIFI - Windows Internet Explorer

http://m.home

Telstra Pre-Paid 3G USB + WIFI

Admin login:

The default Admin login is 'password'

Device & connection status:

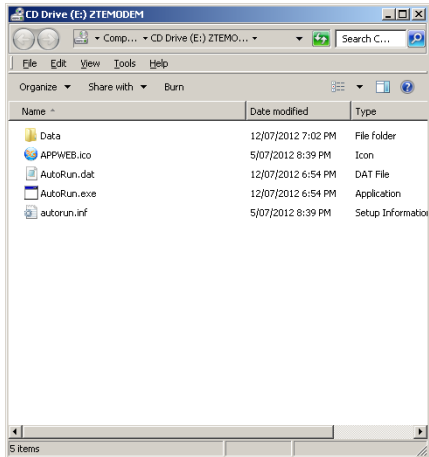
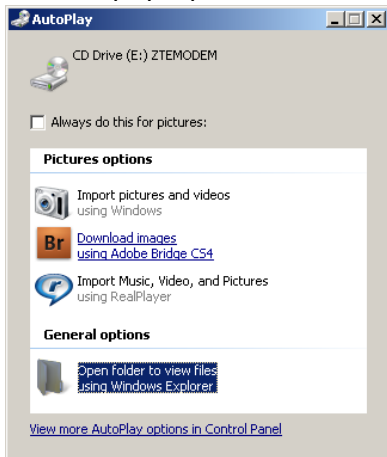
- Disconnected
- "USB+WIFI modem" mode is active
- WiFi devices connected
- 0 Messages
- OMB/00:00:00

Connect

Click [here](#) to access your Account Services

Install the modem shortcut (optional)

If you connect your modem to your computer, you can install a modem shortcut on your desktop and Programs menu. Open the CDROM pop-up, then run the Autorun file to install the shortcuts:



How to use the Connection Manager Software

The default Admin login password is 'password'

See below for a quick review of all the Settings.

Connection

The Connection page shows a quick device summary status

Settings

Mode Selection

USB + Wi-Fi modem – Allows a local USB connection and up to 5 users via Wi-Fi.

USB modem only – Allows a local USB connection only.

Quick Settings – Step through a wizard to set up your connections.

Network Status

H+ Connected	When connected to HSPA+ Highest Speed up to 28Mbps (3G with MIMO) Up to 21Mbps (3G non MIMO)
H Connected	When connected to HSDPA, HSUPA, HSPA
3G Connected	When connected to UMTS / WCDMA
2G Connected	When connected to GSM / GPRS / EDGE
Disconnected	When disconnected from the network

3G Settings

Network Select – WAN Connection Mode is the Telstra Network Connection, which by default will automatically connect.

Band Selection - Sets the network bands your device supports. Normally there is no need to change this setting.

APN Settings – Press Add to create a new APN for your new carrier. Enter the details provided then press Save. Select your new APN using the Profile Selection box, then press Set default to use this APN as your default connection.

Step by step, how to create a new APN (see image below)

1. Log in to the web interface (192.168.0.1 from your browser)
2. Press Disconnect on the home page to disconnect your current data session. You cannot change the APN while you are connected.
3. Go to Settings > 3G Settings > APN Settings
4. Press Add
5. Enter the Profile name for your new connection, eg Telstra
6. Enter the correct APN details eg telstra.wap
7. Press Save
8. Press the Profile Selection box and select the new APN
9. Press Set default
10. Go back to the home page and press Connect to test

TIP: You need to Disconnect your data session in order to make any APN, band selection, or band mode changes.

Telstra Pre-Paid 3G USB + WI-FI - Windows Internet Explorer

http://r

Telstra Pre-Paid 3G USB + WI-FI

ZTE ZTE Australia - Telstra ZTE ZTE New Zealand

Telstra Pre-Paid 3G USB + WI-FI

Connection Settings Record

Mode selection

Quick Settings

3G Settings

Network Select

APN Settings

Wi-Fi Settings

Advanced

Firewall

SD Card

APN Settings

Profile Selection: Telstra

Profile Name: Telstra

APN: telstra.wap

DNS: Auto DNS Manual DNS

Authentication: NONE

User Name:

Password:

Add Save Set default Delete

Wi-Fi Settings

Station List – view number of Wi-Fi users connected to your modem

Basic – Set your main Wi-Fi settings and parameters.

Security – Configure your security mode and password settings.

WPS – Configure your WPS compatible settings.

Advanced

Reset – reset to factory default conditions.

PIN Manage – Manage the SIM PIN Settings.

Router – Set your LAN parameters.

Management – Change the admin password on the web interface.

Firewall (advanced)

Port Filtering – enable port filtering if required

Port Forwarding – enable port forwarding if required

System Security – enable remote management and PING.

SD Card

Enable or disable memory card sharing over the Wi-Fi network. This is useful for sharing files over your Wi-Fi link.

Records

View your data session records.

SMS

Use the SMS interface to receive messages. Messages can be stored on the device or on the SIM card

Device Information

Basic Status – view your 3G and System info including your Network Provider and signal strength parameters.

Network Status – view your network connection state whether you are connected to Telstra and your WAN and LAN IP addresses.

Update – Check to see if updates are available for your device.

MicroSD™ card

If you use a microSD™ memory card in your modem your computer will display a removable disk drive. You can use the modem as an external drive to store and transfer files.

microSD™ cards supported to 2GB are FAT 16 format.

microSDHC™ cards supported to 32GB are FAT 32 format.

If you want to remove the modem please use the Safe Removal of Hardware to stop the removable disk first.

External Antenna Port

The antenna port type is TS9. Only use the correct type supplied from your dealer. Insert and remove the connection carefully. Do not pull on the cable to remove the connection.

Help

Click **Help** to view the help file.

Troubleshooting

If you have any problems with your connection or modem please consult the manual and check this section. If the problem still exists contact your service provider or check our website for more details at zte.com.au

Problem	Possible Causes	Suggested Solution
The user interface doesn't start after the modem is plugged in.	PC configuration is not correct. (No autorun)	Start the program manually by going Start> Program Files or use the shortcut on the desktop.
The modem has no signal.	The antenna is at the wrong angle or position.	Adjust the angle and position of the USB modem.
	You have no network coverage.	Try moving location until you get good reception.
	SIM card requires a PIN number	Remove your SIM. Insert into a mobile handset and unlock the PIN function.

Problem	Possible Causes	Suggested Solution
Data connection failed.	You have no network coverage.	Try moving location until you get good reception.
The modem cannot connect to the internet when overseas	You don't have international roaming enabled on your plan.	Consult your service provider before you go overseas to enable roaming.
No warning tone	The PC soundcard is disabled or on low volume	Check the audio card and adjust the volume.
The microSD™ card cannot be read or is not found.	Re-insert the microSD™ card. The maximum capacity is 32GB SDHC card	Try another microSD™ card and make sure the capacity and format is correct.
Modem will not power up, or powers down in use	Your USB power is not sufficient, especially with older PC hardware	Use the double extension USB lead supplied and plug into 2 USB ports.

Using the USB Extension Cable

In some older PC hardware there might not be sufficient power available from the USB bus to fully power the modem. In these cases you can use the USB double extension lead plugged into two USB ports on the computer. This provides additional power to the modem.

Software Removal

If you wish to uninstall the modem software please follow the steps below:

PC

Start > All Programs (or equivalent) > Select Telstra USB+Wi-Fi > Uninstall

MAC

Select: Telstra USB+Wi-Fi > Uninstall
Follow the prompts to continue.

Precautions and Safety Information

- Some electronic devices are susceptible to electromagnetic interference. The modem is a transmitting device and may cause interference to sensitive electronic equipment such as audio systems, vehicle systems and medical equipment. Please consult the manufacturer of the other device before using the modem.
- Operating of laptop or desktop PCs with the modem may interfere with medical devices like hearing aids and pacemakers. Please keep the modem more than 20 centimetres away from such medical devices. Turn the modem off if necessary. Consult a physician or the manufacturer of the medical device before using the modem near such devices.
- Be aware of the regulations when using the modem at places such as oil warehouses or chemical factories, where there are explosive gases or explosive products being processed. Turn off your modem as instructed.

- Don't touch the antenna area unnecessarily whilst connected. This can affect your modem performance and reduce the signal quality.
- Store the modem out of the reach of children. The modem may cause injury or get damaged.
- The modem contains sensitive electronic circuitry. Do not expose the modem to any liquids, high temperatures or shock.
- Only use original accessories or accessories that are authorized by the manufacturer. Using unauthorized accessories may affect your modem's performance, damage your modem and violate related national regulations.
- Avoid using the modem in areas that emit electromagnetic waves or in enclosed metallic structures eg lifts.
- The modem is not waterproof. Please keep it dry and store it in a cool, dry place.
- Don't use the modem immediately after a sudden temperature change eg from an air conditioned environment to high temperature and humidity outside. In such cases there could be

condensing moisture inside the modem which can cause internal damage. Unplug the modem and leave it for 30 minutes before use.

- Always handle the modem with care. Be careful not to drop or bend the modem.
- There are no user serviceable parts inside the modem. Unauthorised dismantling or repair will void the warranty.

Radiation from Electronic Devices

The USB Wireless modem is a transmitting device with similar output power to a mobile phone. It uses an internal or external antenna to connect to the mobile network. To get the best performance from your device do not cover or shield the device in any way as this will lead to increased output power. Always leave a clear space around the device to allow the transmit and receive signals to propagate. It is not intended to be used as a handheld or body worn device but SAR tests have been successfully completed in accordance with the Australian regulatory requirements.

Software Updates

When the user selects Software Update the USB modem checks an on line server to see if any updates are available. If a new version of modem firmware is available the user needs to select to download the package. Downloading update firmware will consume data and normal carrier charges apply for this data.

Declaration of Conformity

We declare under our sole responsibility that the product(s) detailed in this manual, and in combination with our accessories, conform with the essential requirements of The Radio Communications Standard (Electro-magnetic Radiation Human Exposure) 2003 and the Australian Communications and Media Authority Section 376 of the Telecommunications Act 1997. The highest SAR result recorded in the body position is 1.57 W/Kg.

Ver. 1.4 Dec 2013

Technical Specifications:

Network compatibility	UMTS 850, 1900, 2100 MHz
	GSM 850, 900, 1800, 1900 MHz
Dimensions	94mm x 28.6mm x 12.5mm
Weight	Approx. 29g
Data Rates	HSDPA 3G MIMO up to 28Mbps
	HSDPA 3G Non MIMO up to 21Mbps
	HSUPA Upload up to 5.76Mbps
Current	Resting: 100mA rms Max: 450mA rms
Max Emitted Power	In 3G WCDMA Mode: 250mW In 2G GSM/GPRS Mode: 2W
Interface	USB 2.0
Operating systems	Windows 8, 7, XP SP3, Vista Apple MAC OS X 10.5 and above
Memory card	Up to 32GB microSDHC™
Antenna port	TS9 connector
Temperature	-5°C to +40°C

* Actual customer download/upload speeds will vary.