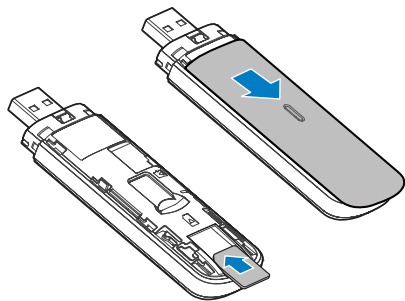


Step 1

Check SIM is inserted

Your micro SIM card should already be inside the device. Check to make sure.

Remove cap from top of your device. To remove the cover gently push down and slide off as shown below.



Step 2

Activate SIM

If your SIM has not been activated, visit telstra.com/activate

Follow the prompts to activate your SIM.

You'll need:

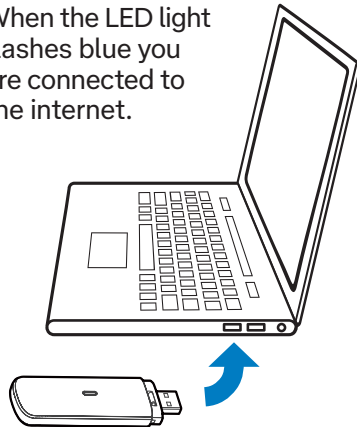
- Internet access
- A valid form of ID
- Access to your email account (to receive a verification code)
- The SIM serial number (SSN) printed on packaging label or on SIM card.

Step 3

Plug into PC

Once your SIM card is active, insert your MF833V USB into the USB port on your computer or other compatible device.

When the LED light flashes blue you are connected to the internet.



LED Indicators

Legend

No Network



The device is not registered to the mobile network. There is no micro-SIM card inserted. There is no network service available.

3G Connection



The device is registered to the 3G network.



Active data transfer on the 3G network.

4G Connection



The device is registered to the 4G network.



Active data transfer on the 4G network.

Green / Blue alternate flashing



The software is upgrading.

Manage your Settings

You can manage your device settings via the modem configuration page.

You can only access the page while your device is connected to your PC or other device.

Web UI:

<http://192.168.0.1>

Password:

Refer to your device label.

Troubleshooting

Solid Red LED - No Network Access

Possible Cause

A missing, faulty or incorrectly inserted SIM.

Possible Solution

- Check you have inserted your SIM card the right way and pushed inside the slot until it clicks into place.
- Ensure SIM is activated.
- Move to different location where there is sufficient 4G coverage.

No Light on LED

Possible Cause

Device is not powered or not detected, or not enough power is supplied.

Possible Solution

- Ensure the modem is firmly plugged into the USB-A port.
- Try a different USB-A port or use a USB adapter.
- Try another computer if available.

Support & Warranty

Contacting Telstra

All calls and support for PIN numbers, SIM card registration, account and billing information, network services and other general enquiries should be directed to Telstra via:



Visit

livechat.telstra.com



Telstra phone

125 88 80



Non-Telstra phone

13 22 00



My Telstra App

Download the My Telstra App on your smart device.

For full user guide:

https://zte.com.au/Manuals/Telstra_4GX_USB_MF833V_Help.pdf



Telstra 4GX MF833V USB Quick Start Guide

Pre-Paid Mobile Broadband