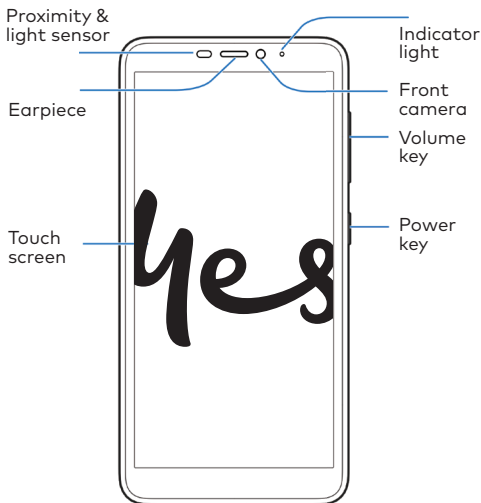
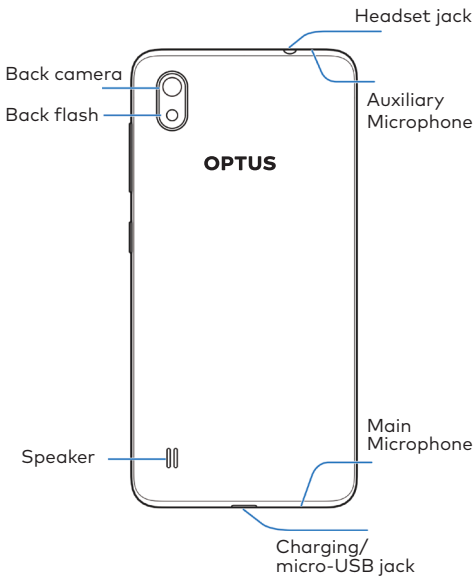


OPTUS

PHONE & SIM QUICK START GUIDE

Optus X Spirit 2





Getting started

The Optus X Spirit 2 is specially designed for the Optus network to give you the best experience possible. It's easy to set up and use, but if you need extra help, this guide will take you through the process. Plus it's packed with tips to help you get the most out of your new phone.

SIM information

Activate your SIM

To activate your SIM, head to **optus.com.au/activate** and follow the prompts. You can do this using a computer, tablet or another smartphone. Or put your SIM in your phone and call 555.

You'll need current and valid ID details (such as your driver's license, credit card or passport) to activate.

Choose your Prepaid plan

While you're activating your SIM, we'll ask you to pick your Prepaid plan. We have plans to suit different types of usage and if the one you choose doesn't work for you, you can change it. See the full range at **optus.com.au/prepaidplans**

Recharge

You can recharge using your debit/credit card to pay in the following ways:

- **Use our free My Optus app.** Find it at the App Store or Google Play.
- **Go online to optus.com.au/recharge** You can also use PayPal or set up **AutoRecharge**.
- **Call 555** from your mobile.
- **Grab a voucher.** Pick one up at any Optus store or at outlets nationwide.

All information contained in this booklet is correct as at 25 October 2018. For the most up-to-date information visit **optus.com.au/prepaidplans**

Tip

Need to check something? Use these shortcuts:

CHECK MY BALANCE

Use the My Optus app, text **BAL** to **9999** or call **555**

CHANGE MY PLAN, SWAP MY SIM or ACCESS
OTHER SERVICES

Text **MENU** to **9999**

CHECK VOICEMAIL

To set up and access, call **321**

GET HELP or SET UP INTERNET/MMS

Head to **optus.com.au/support** or call **1300 555 002**

I NEED A TRANSLATOR

Call **131 450** to speak to Optus via a translator

The details

To request the barring of all premium SMS and MMS services go to **optus.com.au/premiumsms**

Emergency calls to **000** are free; you don't need credit.

Your ID may need to be verified by the government DVS (Document Verification Service) so it will need to be current and valid.

To learn more about your privacy at Optus, visit **optus.com.au/privacypolicy**

For more details about your Prepaid plan, visit **optus.com.au/CIS** and **optus.com.au/standardagreements**

Installing the nano-SIM Card and the microSDXC™ Card (Optional)

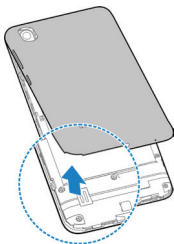
The nano-SIM card can be installed or removed while the phone is turned on.

Power off your phone before removing or replacing the battery.

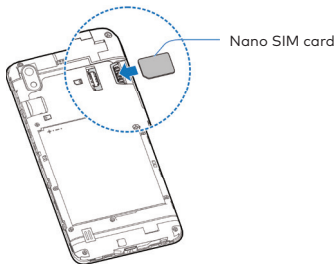
Warning!

To avoid damage to the phone, do not use any other kind of SIM cards, or any non-standard nano-SIM card cut from a SIM card. You can get a standard nano-SIM card from your service provider.

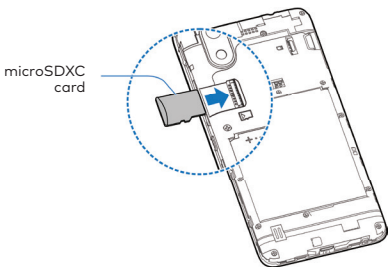
1. Place your finger in the slot at the bottom of the back cover to lift and remove the cover.



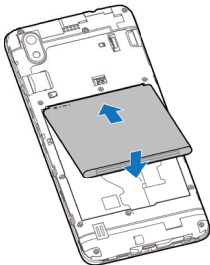
2. Hold your nano-SIM card and the microSDXC card with the metal contacts facing down and slide them into the card slots.



Note: microSDXC™ not included and must be purchased separately



3. Insert the battery by aligning the metal contacts on the battery with the metal contacts in the battery compartment. Gently push down on the battery until it clicks into place.



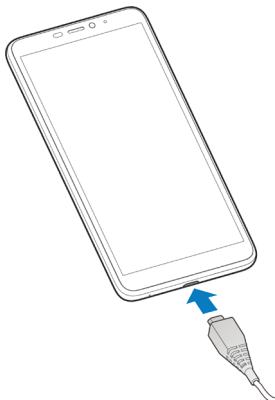
4. Replace the back cover.

Charging the Phone

Your phone's battery should have enough power for the phone to turn on, find a signal, and make a few calls. You should fully charge the battery as soon as possible.

Warning!

Use only OPTUS approved chargers and USB cables. The use of unapproved accessories could damage your phone or cause the battery to explode.



Note: If the battery is extremely low, you may be unable to power on the phone even when it is being charged. In this case, try again after charging the phone for at least 20 minutes.

Legal information

Copyright © 2018 OPTUS

All rights reserved.

No part of this publication may be quoted, reproduced, translated or used in any form or by any means, electronic or mechanical, including photocopying and microfilm, without the prior written permission of OPTUS

Notice

OPTUS reserves the right to make modifications on print errors or update specifications in this guide without prior notice.

Disclaimer

OPTUS expressly disclaims any liability for faults and damages caused by unauthorized modifications of the software.

Images and screenshots used in this guide may differ from the actual product. Content in this guide may differ from the actual product or software.

Trademarks

OPTUS and the OPTUS logos are trademarks of Singtel Optus Pty Ltd.

Android is a trademark of Google LLC; Oreo is a trademark of Mondelez International, Inc. group.

The Bluetooth® word mark and logos are registered trademarks owned by the Bluetooth SIG, Inc. and any use of such marks by OPTUS is under license.



microSDXC Logo is a trademark of SD-3C, LLC.

Qualcomm snapdragon

Qualcomm® Snapdragon™ processors are products of Qualcomm Technologies, Inc.

Qualcomm and Snapdragon are trademarks of Qualcomm Incorporated, registered in the United States and other countries. Used with permission.

Other trademarks and trade names are those of their respective owners.



Don't make or receive phone calls while driving. Never text while driving



Keep your phone at least 5 mm away from your body while making calls.



Small parts may cause choking.



Your phone can produce a loud sound.



To prevent possible hearing damage, do not listen at high volume levels for long periods. Exercise caution when holding your phone near your ear while the loudspeaker is in use.



Avoid contact with anything magnetic.



Keep away from pacemakers and other electronic medical devices.



Turn off when asked to in hospitals and medical facilities.



Turn off when told to on aircraft and at airport.



Turn off when near explosive materials or liquids.



Don't use at gas stations.



Your phone may produce a bright or flashing light.



Don't dispose of your phone in fire.



Avoid extreme temperatures.



Avoid contact with liquids. Keep your phone dry.



Do not attempt to disassemble your phone.



Only use approved accessories.



For pluggable equipment, the socket-outlet shall be installed near the equipment and shall be easily accessible.



Don't rely on your phone as a primary device for emergency communications.